

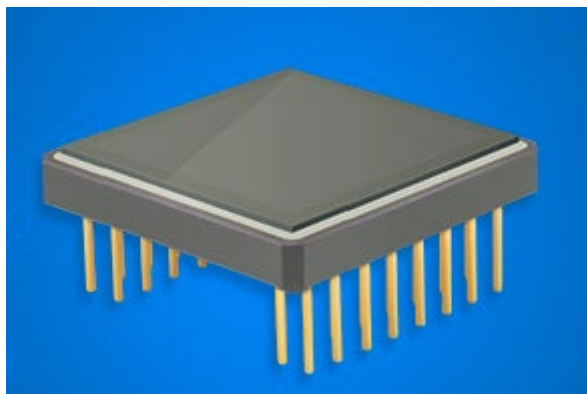
AG3835/3850/6450
Uncooled Thermal Imaging Module
Technical Data



JIANGSU ASCENDENT OPTRONICS INC.

Features

1. High Sensitive



The units have high sensitive thermal imaging sensor. This provides the product with the perfect detail recognition even when the thermal contrast of the surroundings is low-during the snow, dust, smoke, fog, haze, and other atmospheric obscurants.

2. IP67

IP67 waterproof-rated for protection from heavy rainfall, snow, or other precipitation. The unit is designed to run flawlessly, even after submersion in up to 1 meter of water for up to 30 minutes.



3. Built-in Laser rangefinder(Optional)

This product is capable of accurately measuring distance to objects up to 1000 meters away. The Integrated, precise laser rangefinder pervades three modes-single time measurement mode, scanning mode and high-humidity mode.

Wavelength: 905m

Max. measuring range: 1000m

Measurement accuracy: ± 1 m

(Safety class for laser equipment according to IEC 60825-1:2014:1)

4. 1200G shock resistance

This product features high shock resistance and can be used with rifled hunting weapon for such cartridges as 9.3×64,.30-06,.300,.375.etc, and with smooth-bore and airsoft weapon.

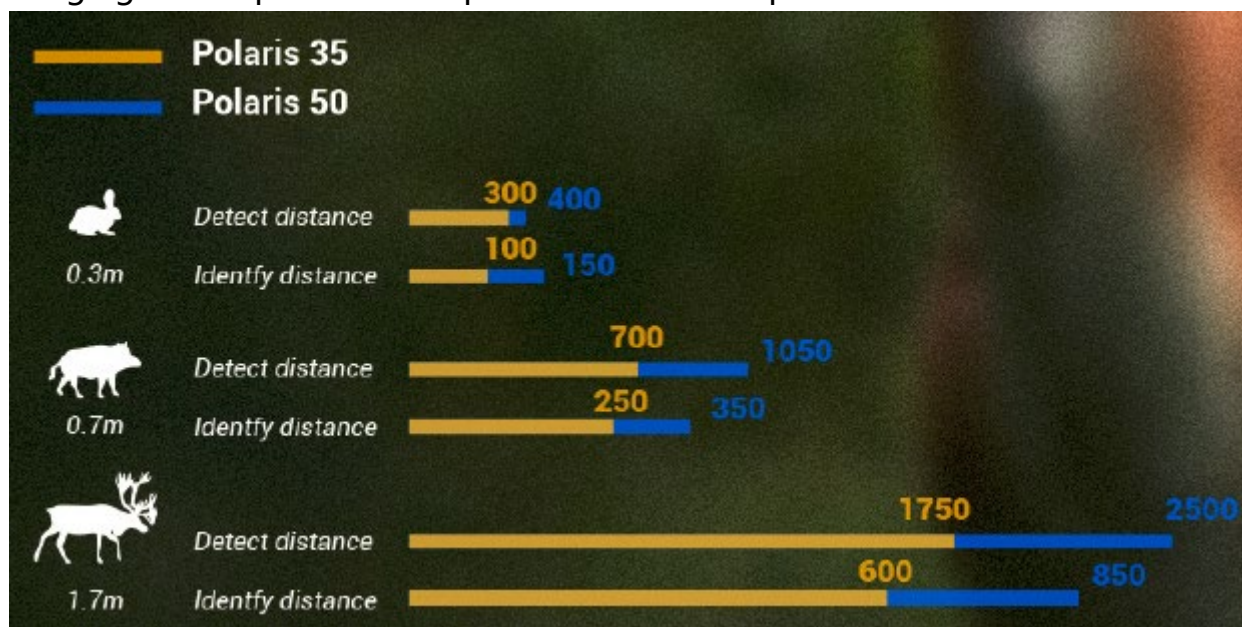
5. Wifi and on-board recording

Built-in Wi-Fi module allows you to connect the product with mobile units which enables you to receive footage in the real-time mode and save the image/video captured by the device.32 Gb of internal memory provides enough space for recording and taking photos of exciting moments.



6. Detection Range

A powerful F3.5/1.1 or F50/1.1 objective lens combined with a highly-sensitive thermal imaging sensor provides exceptional detection capabilities.



7. Multiple palette

The 6-color palette enhances viewing in varying conditions.



8. Long lasting operation time

The product gives out long lasting operation time. External sources, such as power banks power banks with high-capacity is also capable of increasing the total operation time. 2 pcs of 18650 batteries meet the hunting needs of one night.



9. More features

High-resolution OLED display

1024 × 768 high-resolution OLED display offers a crisp, richly contrasted, vividly colored image.

Picture-in-Picture function

Picture-in-Picture displays a $\times 2$ image at the top-center of the overall field of view for precise zooming on an object of interest.

Selectable reticle

A full complement of digitally displayed reticle solutions ensures quick target acquisition and a richly contrasting sight picture. Choose from an array of reticle patterns, colors and brightness settings.

5 types of zeroing parameters memorization

The product has the function of saving five user's zeroing profiles in the memory (for different types of weapons or ammunition), in each case a different reticle can be applied. In addition, each profile allows zeroing at five different distances. Zoom zeroing support ensures particular zeroing precision.

High image frequency

Due to the high image frequency (50Hz) it is comfortable to use thermal camera dynamically (during rapid moving of observer or object of observation).

User-friendly interface

The product is designed with ease-of-operation in mind. User feedback has resulted in the most friendly interface to date, complete with an easy-to read, icon-driven, alpha-numeric status bar at the bottom of the display. Internal menu items and options are also displayed on a contrasting gradient substrate so you can keep an eye on settings without losing sight of your objective.



Technical Data Sheet			
	AG3835	AG3850	AG6450
Detector			
Type	Uncooled Vox		Asi
Resolution	384×288		640×480
Frame Rate	50Hz		
Pitch	17μm		
Spectral Range	8-14μm		
NETD	Less than 50mk		
Optical Characteristics			
Objective Lens	35mm/F1.1	50mm/F1.1	50mm/F1.1
Magnification	1.9×	2.7×	2.4×
FOV	10.7°×8.0°	7.5°×5.6°	12.5°×9.4°
Close-up Range	5m		
Diopetre Adjustment	-5D~4D		
Functions			
Zoom	2×/4×/PIP		
Palette	6 optional(can be customized)		
Start up Time	Less than 5 seconds		
Start up Image	Can be customized		
Menu and Information	GUI(can be customized)		
Image Enhancement	DDE		
Contrast and Brightness	AGC		
Online Update	Both code and GUI resources		
Display			
Type	OLED		
Resolution	1024×768		
External Video	PAL,WIFI		
Storage	32G		
Power Supply			
Battery	2×18650		
External Power Supply	5V micro USB		
Working Time with Battery	8h	8h	6h
Physical Characteristics			
Weight without Battery	618g	650g	630g
Size	180×76×83mm	196×76×83mm	188×76×83mm
Environmental Compatibility			
Water Proof	IP67		
Operating Temperature	-20°C~50°C		
Storage Temperature	-40°C~60°C		
Laser Rangefinder(Optional)			
Safety Class for Laser Equipment According to IEC	1		

60825-1:2014	
Measuring Range	5~1000m
Measurement Accuracy	±1m